

**DotPocket 3.0**  
**for Windows Mobile 5.0/6.0**

**Users Guide**

Copyright © 2008-2009 Eyeline DotPocket 3.0  
All rights reserved.

While this user's manual is kept as current as possible, there may be some screens that differ slightly from the latest version of the software, which is under continual development. However, the concepts and procedures described in the User's Guide are up to date and valid.

Windows CE, Windows 98, Windows XP and Windows Vista are registered trademarks of Microsoft Corporation.

All other trademarks are the property of their respective owners.

All other products or company names are trademarks or registered trademarks of their respective holders.

## TABLE OF CONTENTS

<b>Chapter 1. Introduction .....</b>	<b>2</b>
<i>Abbreviations.....</i>	<i>2</i>
<b>Chapter 2. Installation .....</b>	<b>3</b>
<i>Supported devices and operation systems .....</i>	<i>3</i>
<i>Application components.....</i>	<i>3</i>
<i>Product installation .....</i>	<i>3</i>
<b>Chapter 3. Getting started .....</b>	<b>4</b>
<i>Connecting your Pocket PC to desktop PC.....</i>	<i>4</i>
<b>Chapter 3. Main activities .....</b>	<b>5</b>
<i>Work with PPC .....</i>	<i>5</i>
<i>Using Toolbar of the Screen manager dialog .....</i>	<i>5</i>
<i>File manager dialog.....</i>	<i>6</i>
<i>Disconnect .....</i>	<i>7</i>

# Chapter 1. Introduction

The problem with the most of remote control applications on the market is that users need to establish manually the connection from the Pocket PC devices to the client PC. There is a need for more convenient way of interaction of these devices.

DotPocket application is designed to carry remote management and control of Pocket PC with the help of Desktop PC. This application provides for secure and high-performance output from Pocket PC devices onto Desktops PC.

After connecting your Pocket PC device to Desktop PC via DotPocket system you can work with all applications installed on PPC from Desktop PC. You can also transfer data from PPC to Desktop PC and vice versa, capture screen images of Pocket PC and save them in BMP format and also capture screen movies and save them in AVI format.

## Abbreviations

PC	Personal Computer
DPC	Desktop Personal Computer
PPC	Pocket Personal Computer

## Chapter 2. Installation

### Supported devices and operation systems

DotPocket application is able to run on the ARM PPC devices which are the main stream on the market.

To run the application you should have one of the following PPC device operation systems: Windows CE 5.0, Windows CE 6.0.

On your desktop PC you should have one of the following operation systems: Windows 98, Windows XP, Windows Vista.

### Application components

DotPocket application consists of the following components:

- **DotPocket PPC service** component residing on Pocket PC devices and providing such services as discovering device connectivity and input/output operations;
- **DotPocket Desktop** component residing on the user's Desktop PC providing input/output operations with the remotely controlled Pocket PC devices.

### Product installation

All components are bundled in one installation package. User can install DotPocket application on the Desktop PC and Pocket PC through this installer.

The installer creates shortcuts for DotPocket Desktop component in the Start Menu and on Desktop of the Windows operation system. Also it creates shortcuts to this user manual, to install Pocket PC part of the application and for uninstalling DotPocket application.

In order to install Pocket PC part of the application from the installer or through Pocket PC installation shortcut it important to have Active Sync application installed on Desktop PC on Windows XP operation system or Windows Mobile Device Center on Windows Vista operation system.

It is also possible to install Pocket PC part of the application by copying CAB installation file directly to Pocket PC device and running it from there.

## Chapter 3. Getting started

You should define at the beginning, what method of connection of your Pocket PC to Desktop PC you will use. There are 2 opportunities: TCP/IP connection and RAPI connection.

TCP/IP connection requires network card. Also you should have host IP address of your Pocket PC.

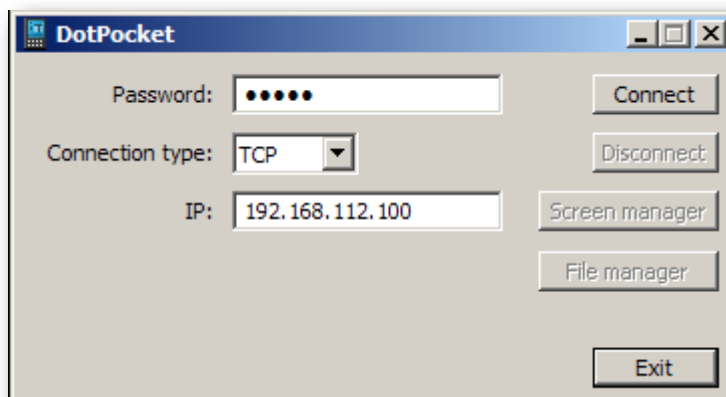
RAPI connection implies that you have Microsoft ActiveSync or Windows Mobile Device Center applications installed on your Desktop PC with Windows XP or Windows Vista respectively.

If you have chosen TCP/IP connection, insert a network card to the special chamber of your Pocket PC and connect to the public network.

If you have chosen RAPI connection, first run Microsoft ActiveSync or Windows Mobile Device Center application and establish a connection between Pocket PC and Desktop PC.

### Connecting your Pocket PC to desktop PC

Run DotPocket application from your personal computer. Started application looks like this:



First of all you should connect your Pocket PC to Desktop PC within DotPocket application. Please follow the steps below.

1. Run Pocket PC part of the application and type password which will be used to identify you when connecting to device.
2. Run DotPocket and type the same password in the corresponding field.
3. Select "Connection type" (RAPI or TCP/IP).
4. If you use TCP/IP connection then type IP address of your Pocket PC.
5. Press "Connect" button.

Now you can run "Screen manger" or "File manger".

## Chapter 3. Main activities

### Work with PPC

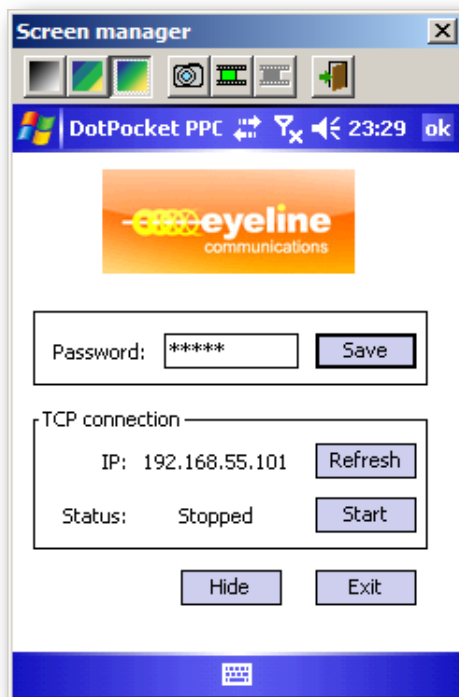
After you have established a connection between Desktop PC and Pocket PC via DotPocket application, you can see the screen of your PPC in Screen manager and file system of Pocket PC in File manger. Also you can work with applications installed on PPC from desktop PC. For that you may use keyboard and mouse.

All mouse and keyboard events of Pocket PC will be reflected to Desktop PC and vice versa, all mouse and keyboard events of Desktop PC will be reflected to Pocket PC. For example, if you run some application on PPC (Pocket Word, Pocket Excel etc) and make changes to some file, all these changes will be reflected to DotPocket Screen manager window of your Desktop PC. And conversely, you can run the necessary application in DotPocket Screen manager window of your Desktop PC, type there all the necessary information using desktop keyboard and mouse, and all changes will be displayed on the screen of Pocket PC.

### Using Toolbar of the Screen manager dialog

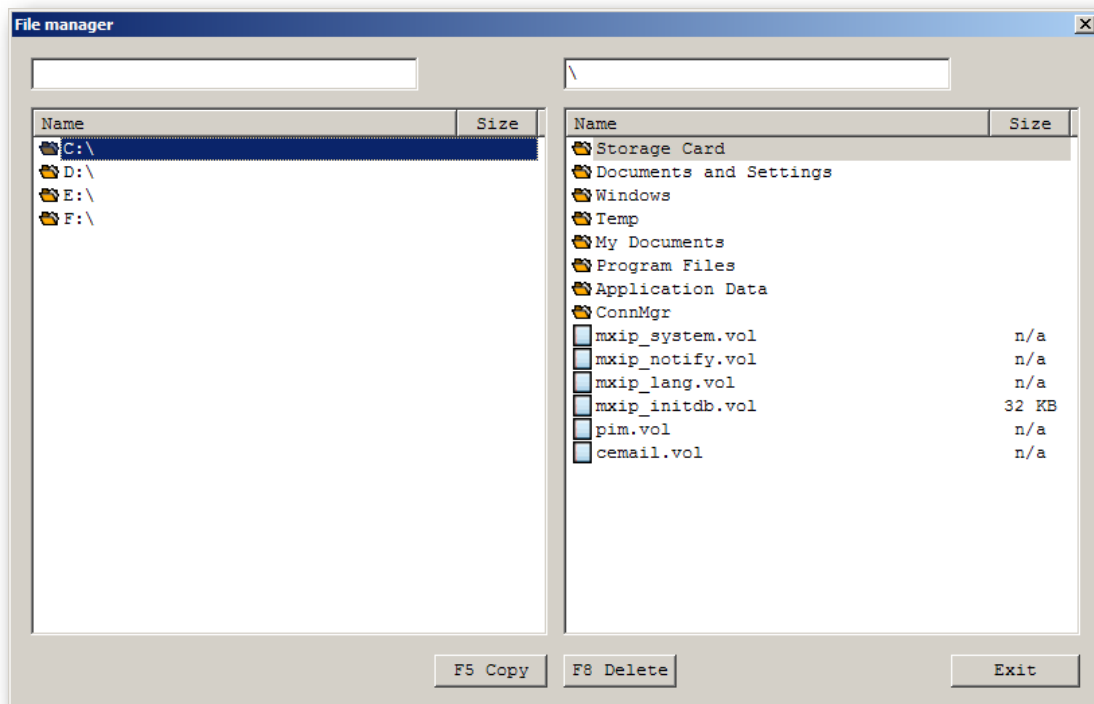
After your Pocket PC has been connected to Desktop PC and you started Screen manager dialog you can perform different operation such as:

- Change number of colors the screen painted with (this can help in improving speed of connection), there are 3 different modes: 4, 8 and 16 bit per pixel
- Make screen shots and save them in BMP file format.
- Make screen movie capture of all activities performed on the Pocket PC and save them in AVI format.



## File manager dialog

DotPocket application enables file transfer between Desktop PC and Pocket PC. Click “File manager” button in main dialog. The following form will be displayed:



On the left there are folders and files of Desktop PC, on the right there are folders and files of Pocket PC.

To transfer the certain file from desktop PC to PPC:

1. Select the necessary folder in PPC area, where the file will be transferred.
2. Select the necessary disk and folder in Desktop PC area. Click the file you want to transfer to Pocket PC.
3. Click “F5 Copy” button or press “F5” key on keyboard.

To transfer the certain file from Pocket PC to Desktop PC:

1. Select the necessary disk and folder in Desktop PC area, where the file will be transferred.
2. Select the necessary folder in PPC area. Click the file you want to transfer to desktop PC.
3. Click “F5 Copy” or press “F5” key on keyboard.

Also it is possible to delete file from Desktop PC and Pocket PC, but one have to be careful not to delete important files.

## **Disconnect**

When you finish the session of combined work of Desktop PC and Pocket PC, close File manager or Screen manger and disconnect PPC from Desktop PC by clicking on “Disconnect” button in main DotPocket dialog.